

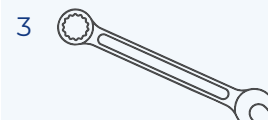


# SOFT TOP SUN CANOPY AND WEATHER SHIELD

## INSTALLATION GUIDE FOR AIDACARE SCOOTERS

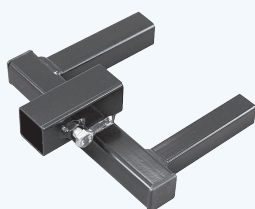
### What you'll need

1. Phillips head screwdriver
2. Flat head screwdriver
3. 13mm spanner



### Component Combinations

Follow steps below in order when selecting what to fix to the scooter.

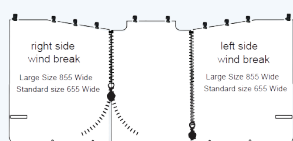


### 1. MOUNTING

2-1 Accessory Adapter SCA668314 / PACTM21

#### REQUIRED

for Aspire (CTM) scooters if rear bag is not included



A Rear and side shields



A Rear and sides fitted



B Front fitted



Complete Weather Shield Set

### 3. WEATHER SHIELD

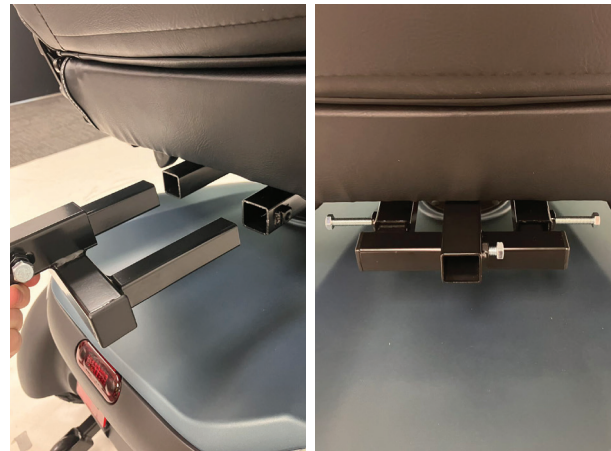
You will need to order one of each from A, B, C, D depending on your scooter model.

See pages 5 & 6 for guidance on scooter canopy size and which front bracket (D) you will need.

PARTS	STANDARD	LARGE
A. Rear and sides section	SCA668402 / PAWB3STZIP	SCA668404 / PAWB3LZIP
B. Front section	SCA668406 / PAWRSFC21	SCA668397 / PAWRSFC22
C. Bungee cord kit	SCA668408 / PAWBBCORD	SCA668408 / PAWBBCORD
D. Front bracket	The front bracket is unique for each scooter. See pages 5 & 6 for guidance.	

**NB** All images are for illustration only. See pages 5 & 6 for recommended canopy size and bracket installation.

## INSTALLATION STEPS Soft Top Sun Canopy



### STEP 1

Check to ensure the canopy is the correct size for the scooter that you are installing it on to.

Check pages 5 & 6 for guidance.

[2-1 Accessory Adapter & 'L' Piece \(Only needed for Aspire Scooters and if there is no rear bag already in place\)](#)

### STEP 2

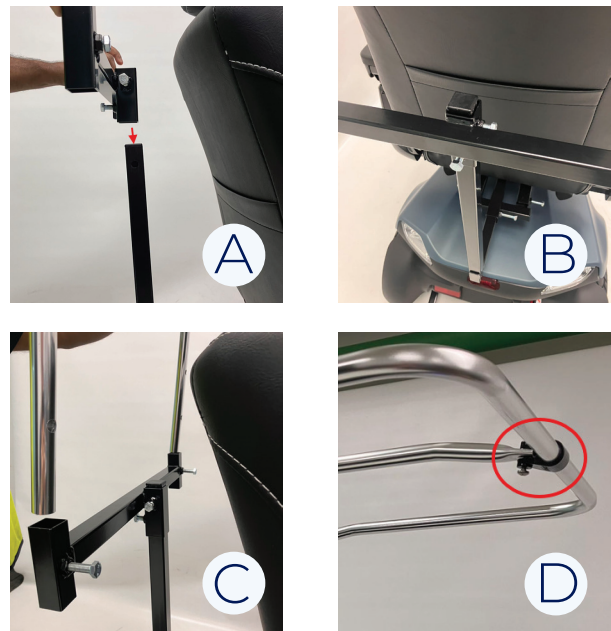
[If there is a rear bag already installed onto the scooter, skip to step 4.](#)

Install the 2-1 Accessory Adaptor on the accessory bracket below the seat at the rear of the scooter.



### STEP 3

Install the 'L' shaped canopy mount onto the 2-1 Accessory Adaptor.



### STEP 4

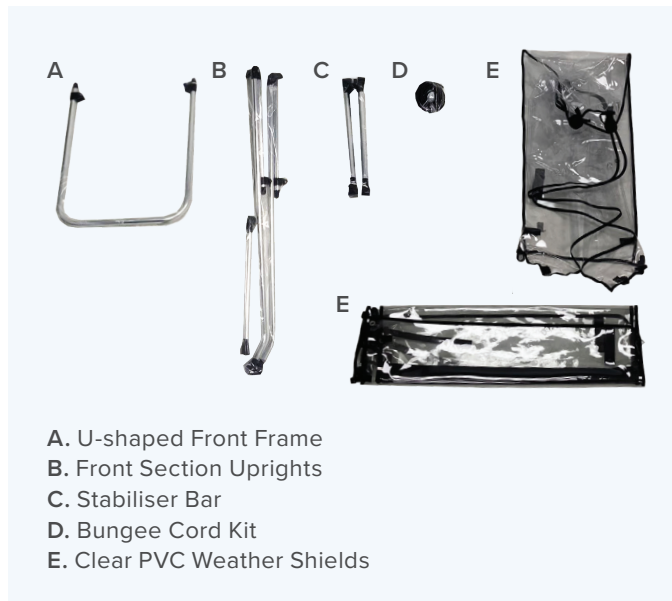
Install the sun canopy frame.

- Install the T-bar (A) onto the 'L' Piece installed in step 3 or on the rear bag if applicable. Make sure it is oriented correctly as shown in image (B).
- Insert the sun canopy upright into the T-bar making sure all bolts are tightened (C).
- Attach the central roof bar to the end of the outer roof frame (D).

[If you are not installing a Weather Shield, then install the soft cover on the top of the frame using the Velcro to hold it in place.](#)

## INSTALLATION STEPS Weather Shield

Ensure steps 1-4 from page 2 are completed before starting step 5.



### STEP 5

Check to ensure all components for the Weather Shield are present and correct for your model.

### STEP 6

Install the front bracket. Each scooter requires a different bracket design and installation. See pages 5 & 6 for further information.

**NB** Front bracket may appear different on your scooter.



### STEP 7 Front section

To install the front section for the Weather Shield:

- Place the U-shaped frame onto the front bracket (A) installed in step 6 and the hose clamps to secure it in place (B).
- Secure the front section uprights to the front end of the sun canopy frame installed in step 4, with the bow knuckles (C). Make sure they are oriented correctly (down, then forward) as shown in the image (C).
- Attach each end of the front frame section together with the 4 x bow knuckles on the front (2 x each side) (D). Leave these loose for now so that they can be adjusted later.





#### STEP 8

Attach the stabiliser bar between the upright and horizontal sun canopy frame as shown in the image.

Stabiliser bars are only needed when installing the Weather Shield.



#### STEP 9

To install the clear PVC sections and the sun canopy roof:

- To correctly orient the weather shields, the hooks must go around the outside of the frame as pictured in (A). The rear and side weather shields should be placed on the 'inside' of the frame (ie. between the seat and 'L' Piece / rear bag).
- The front top corner of the side weather shield is hand bolted in place with the supplied bow knuckles as pictured in (B).
- Measure and cut the bungee cords (90mm shorter) (C) and hook them around the bottom edge of the weather shield and the scooter frame to secure them in place (D).



#### STEP 10

Adjust the height and angle of the front frame (A) to clear the scooter basket before tightening all bolts and fittings. If installed and adjusted correctly, all components should line up including the Velcro on the side as pictured.

# SCOOTER REFERENCE GUIDE All Models

See below for recommended canopy size and bracket installation for the Aidacare range of scooters.

**SCOOTER**  
(Recommended Canopy Size)

**BRACKET CODES**  
AIDACARE / POLARIS

**INSTALLATION**



**SIERRA HS589**  
(Standard canopy)



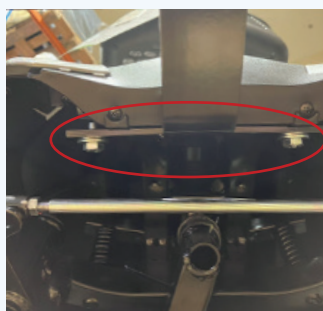
SCA668284  
PAWRCTM



**OSCAR HS520**  
(Standard canopy)



SCA668286  
PAWRCTMHS520



**JUNO HS898**  
(Large canopy)



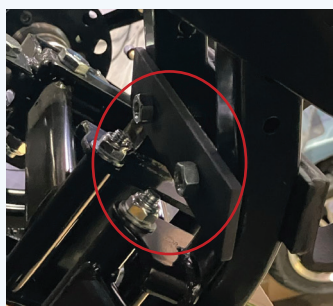
SCA668288  
PAWRCTMHS898



**ODIN HS828**  
(Large canopy)



SCA668290  
PAWRCTMHS828





**SCOOTER**  
(Recommended Canopy Size)

**BRACKET CODES**  
AIDACARE / POLARIS

**INSTALLATION**



**ZULU HS928**  
(Large canopy)



SCA668284  
PAWRCTM



**NB** Sierra pictured. Mounting position/brackets same as Zulu.



**PRIDE PATHRIDER 130XL &  
PURSUIT 130XL**  
(Large canopy)



SCA668292  
PAWRP130XL



**NB** Bracket installation requires you to remove the front bumper from the scooter. The brackets are then placed between the frame and the plate before reassembling the front bumper with supplied bolts. 130XL Pursuit requires 5mm Allen key and 10mm spanner.



**PRIDE PATHRIDER 140XLE**  
(Large canopy)



SCA668294  
PAWRP140XL  
/150XL

